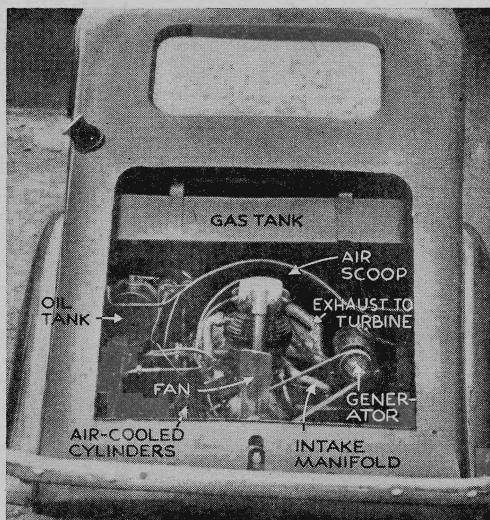


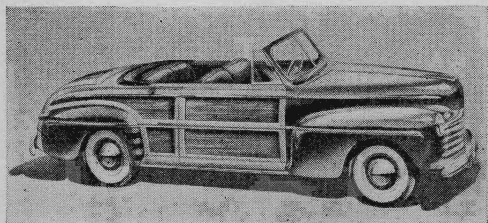
AUTO IDEAS



ENGLISH MOTORISTS soon may be able to buy a light car for only \$400. William Denis Kendall, who designed the four-passenger model above, says he will employ mass-production methods at his factory in Grantham, England, to keep the price within that figure. In tests, the three-cylinder radial air-cooled engine developed 20 hp., propelled the car at a maximum speed of 60 m.p.h., and gave 40



miles to a gallon of gasoline. The designer claims that power is increased through a "turbine" method of bringing the heat and pressure of the exhaust gas into play. Built with no frills, not even an extra wheel, the car weighs approximately 1,200 lb. A roomy luggage compartment is located under the hood and a single headlight is centered in a dummy radiator.



STATION WAGON and convertible both contribute some of their features to a sport-type car, shown at the left, which the Ford Motor Company has announced for limited production this year. Traditional wooden panels of the station wagon are applied over a steel frame, while a power-operated top and close-coupled seating are borrowed from the convertible coupe.

SPORT CYCLE. A small power cycle developed by the Wyse Laboratories, of Dayton, Ohio, is equipped with a centrifugal hydraulic transmission that eliminates gear shifting. Given the trade name of "Wyse Cycle," the 245-lb. vehicle might be considered a cross between a motorcycle and a scooter, for it has some characteristics of each. In the photo at the right, the smiling miss is seated on a test model which differs in several respects from the designer's original conception shown in the inset. In tests, the cycle traveled at speeds up to 56 m.p.h. and gasoline consumption averaged 70 miles per gallon. Now in production, the cycle may be obtained with either a 3- or a 4-hp. engine. Aircraft-type wheels and tires are used.

