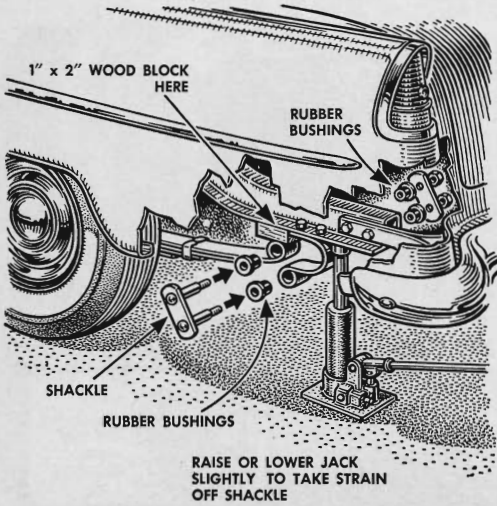
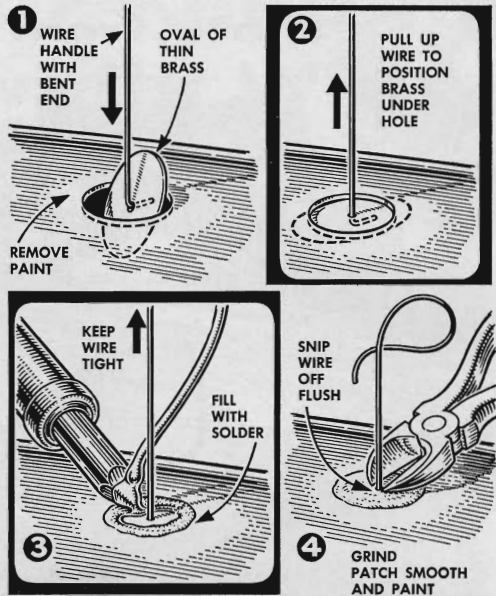


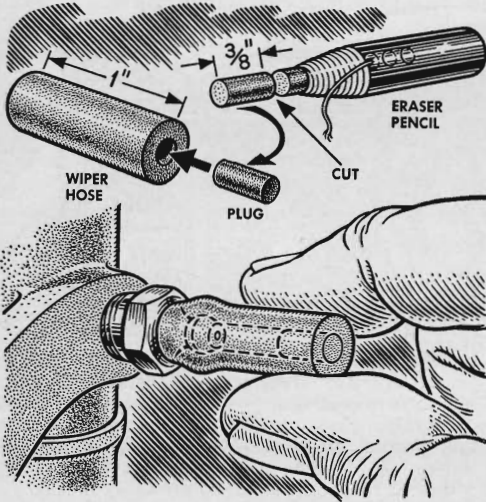
More Hints from the Model Garage



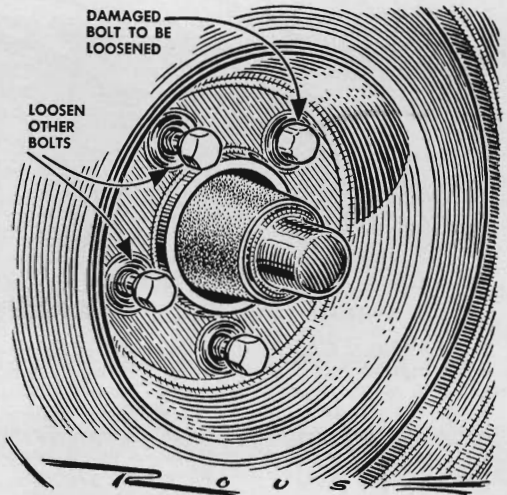
Worn spring bushings can be replaced without effort. Jack up the chassis until there is room for a block of wood between the spring and hanger eyes. Then lower the chassis. With tension off the spring, the shackle can be removed easily.



To fill a screw hole after removing an accessory, back it up with an oval of brass held in place with a wire. Flow solder over it to build up the surface and snip off the wire when the solder sets. Grind the patch flush and paint to match.



Protective caps, quickly made from windshield-wiper hose, will keep grease fittings clean and make them easy to find. Cut the hose into 1" pieces and close one end with plugs cut from an eraser stick. Clean the fittings *before* you cap them.



When a wrench won't grip the head of a damaged wheel lug, you can sometimes jar it loose. With the car jacked up, loosen the other lugs. Then lower the car and rock it back and forth to make the wheel shift slightly, causing the lug to turn.