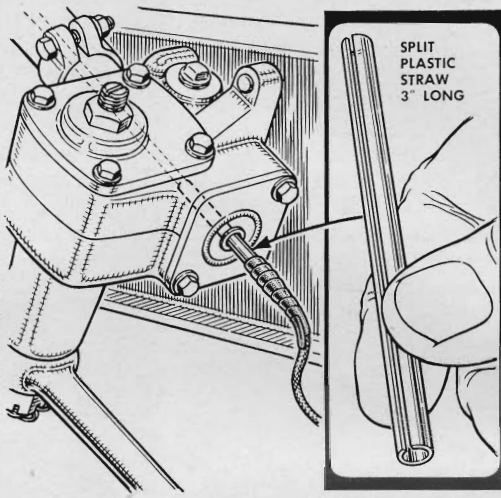
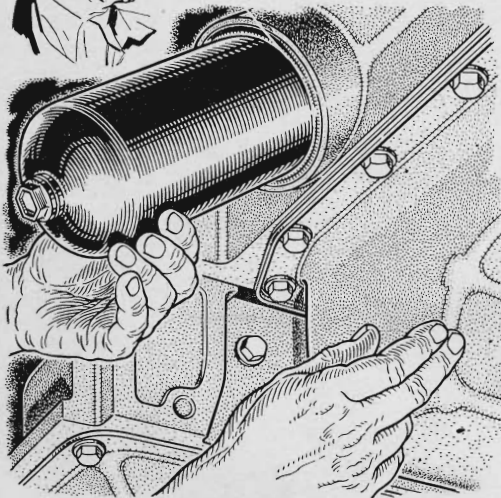
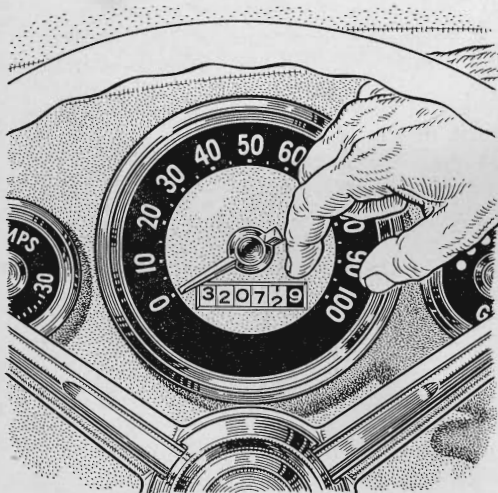


# Hints from the Model Garage

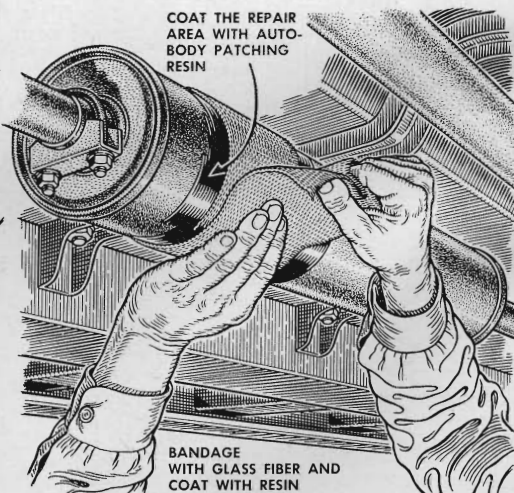


**To check an oil filter quickly**, feel the temperature of its housing after warming the engine. If the housing feels substantially cooler than the oil pan, the cartridge is dirty and oil is bypassing it. Change it as soon as possible.

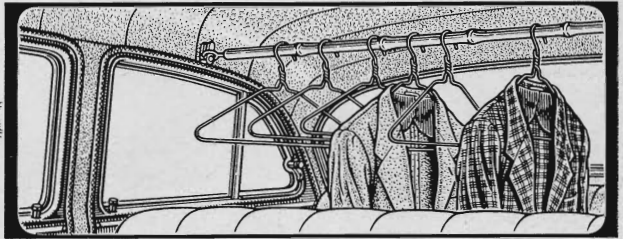
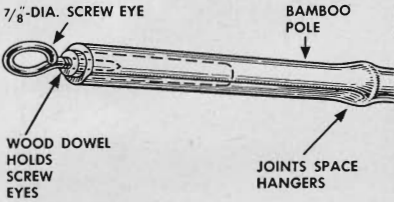
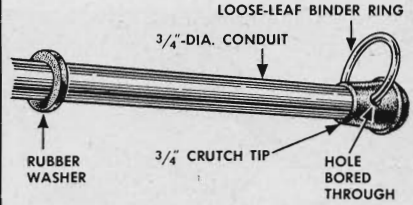
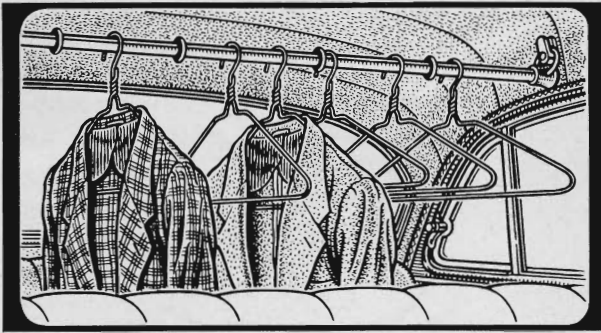
**A horn wire that's frayed** where it enters the steering column can cause the horn to blow when you turn the wheel. Slit a plastic soda straw and slip it over the wire to cover the frayed spot. To hold the straw, tape it to the wire.



**Buying a used car?** Look closely at the figures on the speedometer. If the first three digits are not in perfect alignment, you can suspect the mileage has been set back. Try to estimate the *true* mileage by the condition of the tires and pedals.

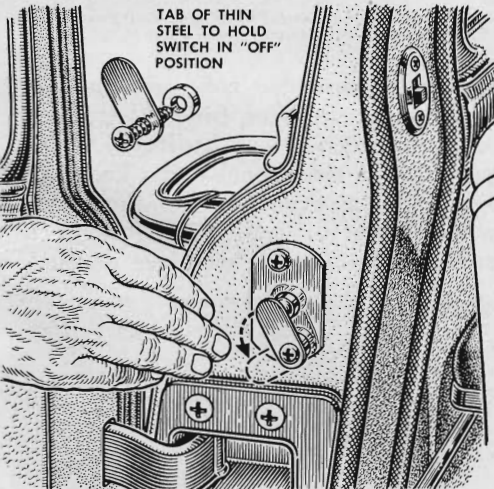


**A permanent muffler repair** can be made with a glass-fiber body-patching kit. Wire-brush the area around the damaged part and apply a coat of liquid resin. Then wrap a strip of glass-fiber cloth around it and saturate it with resin.



**Garments stay wrinkle-free** if you hang them on a bamboo pole or a length of conduit suspended between the rear-seat coat hooks. If bamboo is used, plug each end with a dowel and fit it with a screw eye. The knobby joints will keep hangers

from sliding. On a rack made of conduit, protect the car by pressing crutch tips over the ends. Hang the rack on loose-leaf rings snapped into holes drilled through the ends. Slip hose washers on the conduit to space the hangers.



**Sitting in a drive-in** on a warm night, you can keep the car doors open without burning the dome and courtesy lights. Install metal tabs on the door switches and swing them over the switch buttons to hold them in the "off" position.



**Tie a cork gasket in place** with *light* sewing thread to keep it from slipping out of position during installation. The thread needn't be removed, as it won't interfere with the seal or the insertion of bolts. For neatness, trim off the free ends.