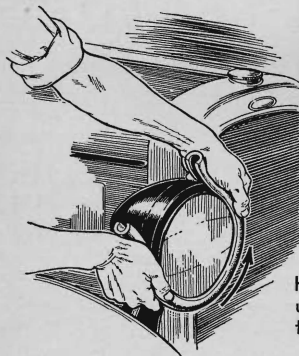




## Helping a Driver To Back into a Parking Space

MOST persons who attempt to help a driver back into a crowded parking space stand on the curb and make a series of beckoning, traffic-cop gestures with their hands. A much better method, I have found, is for the helper to hold his hands approximately as far apart as the remaining distance between the backing car and the parked automobile behind, moving them together as the driver inches the car into place. In this way, the driver will be able to control his car more accurately, as he can regulate the movement with reference to the space available.—W.F.F.



CUT RUBBER AWAY TO MAKE A CHANNEL

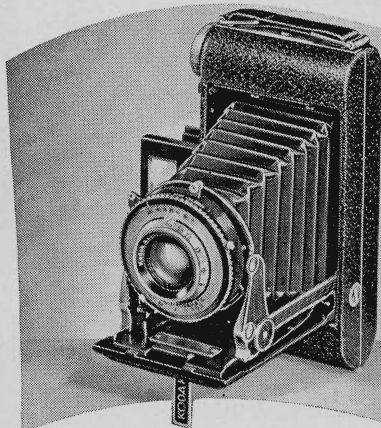
RUBBER HOSE

How to prepare and use the handy grip to remove a lens

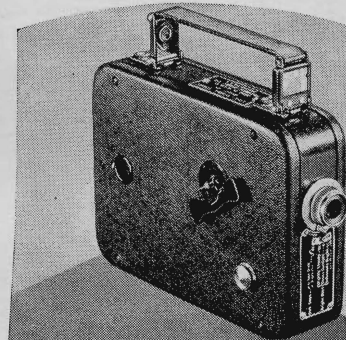
## Hose Grips Lens Holder

HEADLIGHT-LENS holders that are hard to remove can be started easily with an old scrap of garden hose about two thirds as long as the circumference of the lens. Slice off lengthwise the top third of the hose to form a channel as shown in the inset above. Placed along the lens rim, the hose provides a safe and efficient nonslipping grip with which to turn the lens.—A.H.W.

# KODAK



**KODAK SENIOR SIX-20 (f.4.5)...** Combination of body shutter release and eye-level finder offers new picture-making certainty... minimizes camera movement, catches the scene when it's exactly right. Kodak Anastigmat f.4.5 lens; 1/200 Kodamatic shutter. One-finger bed release. 2¼x3¼-inch pictures. **\$28**



### CINE-KODAK EIGHT

"Economy" movie camera. Gives you 20 to 30 movie scenes of newsreel length on a roll of film costing \$2.25, black-and-white, finished, ready to show. Kodachrome (full-color) movies cost just a few cents more a scene. **\$32<sup>50</sup>**