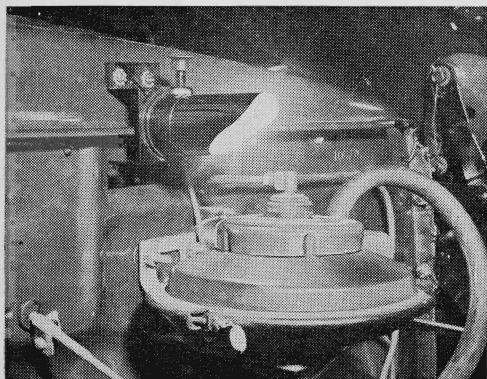
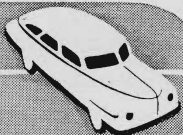
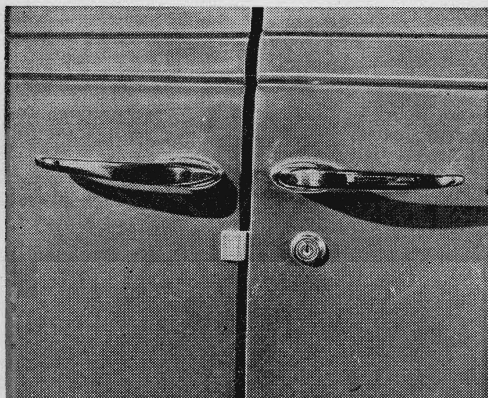


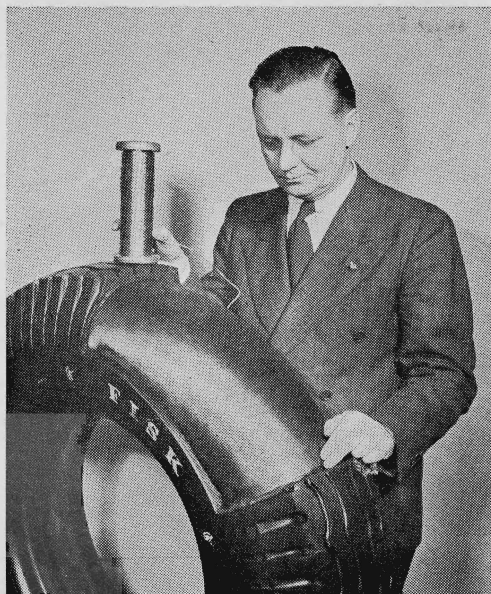
AUTO IDEAS



LIGHT UNDER THE HOOD. An engine-compartment light recently placed on the market by the Ford Motor Company lights up automatically when the hood is raised. Quickly installed with self-tapping screws, the light can be connected to the starting-relay switch, voltage regulator, or any hot output wire. A rubber-covered spring-type switch operates the light.



SAFETY LATCH ON REAR DOOR. Parents will be interested in this lock that prevents the opening of the rear doors when the front doors of a car are closed. The catches are easily put on any car with a screwdriver and retail for \$2 a set. They are made by Jelco Company, of Minneapolis, and distributed nationally.



STEEL WIRE HALTS BLOWOUTS. Woven into the top ply just below the tread of the tire shown here is a network of steel wire, intended by the United States Rubber Company to lessen the likelihood of blowouts on heavy trucks. In addition, the wire permits the use of fewer plies and gives a cooler-running carcass. The tire is still in the experimental stage.



SHADE CUTS SKY GLARE. A sheet-aluminum shade with stainless-steel and chrome-plated brass fittings affords drivers protection against overhead glare. It is made by the Fulton Company, of Milwaukee, in sizes to fit most popular and de luxe models of 1942, 1946, and 1947 cars and many others of older make.