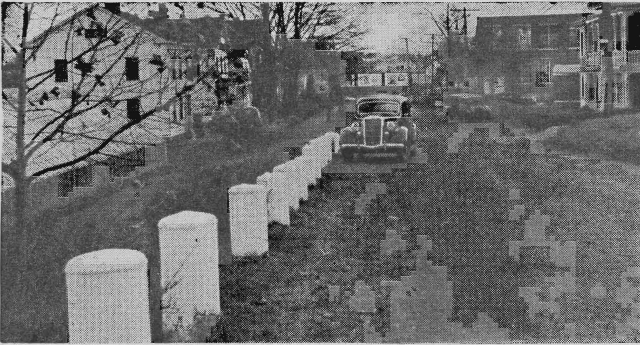
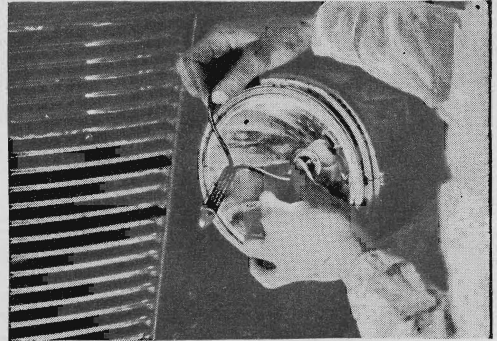
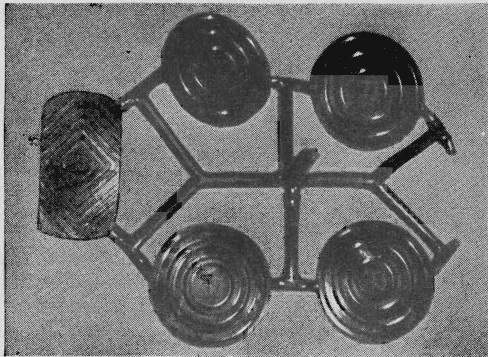


AUTO IDEAS



HOT-WATER TANKS salvaged from a dump have proved a satisfactory substitute for costly cable fence at a danger point where a street skirts a steep hill in Bridgeport, Conn. The 6' domestic-type tanks were buried for about half their length, filled with concrete, sealed, and painted white. Several cars have crashed into them, but all of the tanks still stand firm.—CHARLES BARR.

PLASTIC PEDAL PADS for automobiles are being produced at Bay City, Mich., by the Bay Manufacturing Division of the Electric Auto-Lite Company. Molded in various sizes from a rubberlike plastic, the new pads, shown in the photograph below, are designed to replace worn ones made of rubber. All are deeply ridged, providing a firm grip for the motorist's foot. They also are designed to fit securely over the bare steel of the pedal.



CHECKING CIRCUITS ranging from 5 to 50 volts is simplified by the above tester, manufactured by the Ideal Commutator Dresser Company, of Sycamore, Ill. It not only detects open circuits and burned-out fuses, but can be used to indicate relative line voltages. Small enough to carry in a pocket, the tester is intended for automobile and aircraft mechanics, telephone repair men, and electricians. A transparent plastic housing protects the lamp.

LOADING AND UNLOADING of trucks is achieved with greater ease and speed by means of an elevating endgate now available from the Fruehauf Trailer Company, of Detroit, Mich., for installation in place of an ordinary tail gate. Hydraulically driven

by the truck engine, the steel gate serves as an elevator to raise or lower materials weighing as much as one ton. By its use, one man can handle objects normally requiring several persons. Operating levers are located at the rear of the vehicle.

