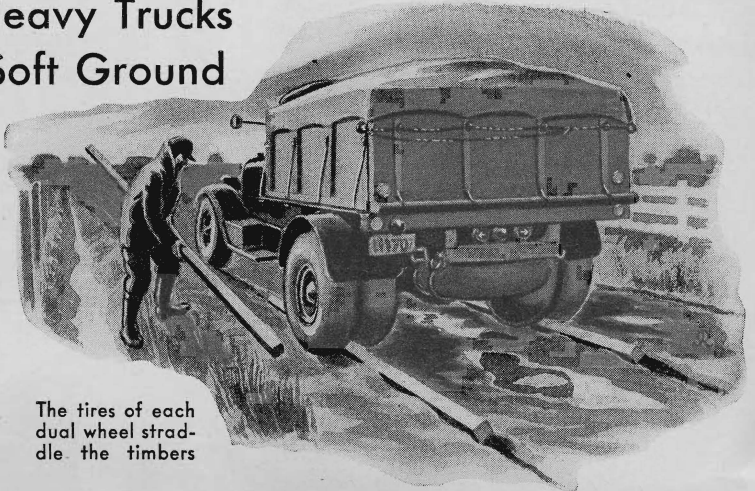


Handy Helps for Motorists

Studs Help Heavy Trucks Get Across Soft Ground

DRIVERS of trucks with dual-type rear wheels will do well to provide themselves with two lengths of round or square timber for emergency use when the going gets tough on muddy roads or in sand pits where heavy loads must be carried across particularly soft or spongy spots. Placed just in front of each hind wheel, the timbers become effective tracks which the dual tires straddle when the truck moves forward. Four-by-fours are recommended, or poles of about four inches in diameter depending on the weight of the load. Lengths

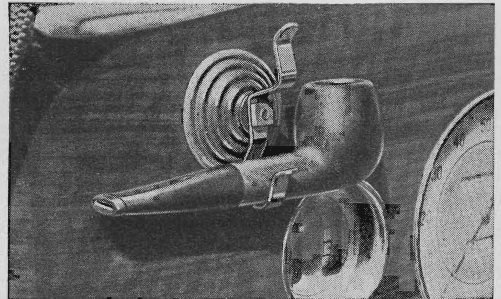


The tires of each dual wheel straddle the timbers

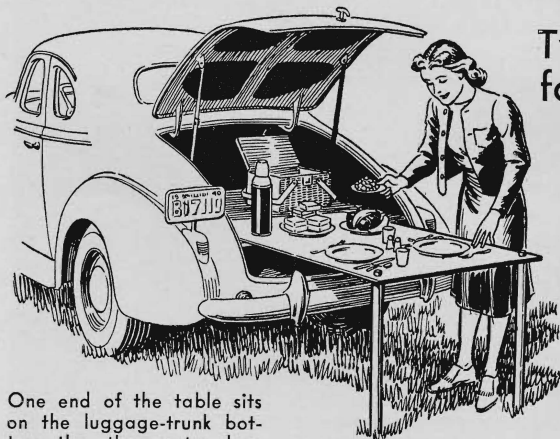
of eight feet will get you safely across most bad spots, and are not too long for carrying conveniently on heavy trucks without interfering with the load.—W. F. R.

Vacuum-Cup Clothes Hook Holds Pipe on Dashboard

MOTORISTS who smoke pipes will find that an ordinary ten-cent suction-type clothes hanger makes a most convenient pipe holder for the automobile. Fastened to the instrument panel in a handy position, the hook can be bent easily to accommodate any standard-size pipe shank and hold the pipe in an upright position, as in the typical installation shown in the illustration at the right.—J. C. M.



The fixture provides a handy place to put your pipe



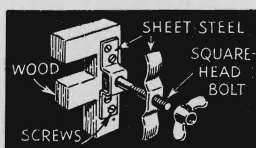
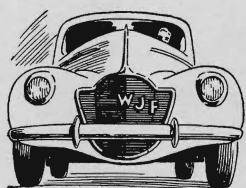
One end of the table sits on the luggage-trunk bottom, the other on two legs

Two-Legged Picnic Table for Car's Luggage Trunk

A STURDY picnic table for use at the rear of your car can be made easily from thin plywood as shown in the accompanying sketch. If the floor of your luggage compartment is large, the table can be of one piece. Otherwise, for storing, it can be hinged in the middle to fold like a table-tennis table. Two legs at the back also can be hinged for folding. Their length is determined by the height of the floor of the luggage compartment from the ground.—F. W.

Car Owner's Initials Decorate Radiator

YOUR initials in block letters two or three inches high and a half inch thick make an attractive decoration for your car's radiator grille. Cut the letters from wood with a jig saw, and mount them by means of wing nuts and bolts attached to the backs of the letters with sheet-metal clamps shaped as shown below. The letters may be painted to match the car's trim.—W. F.



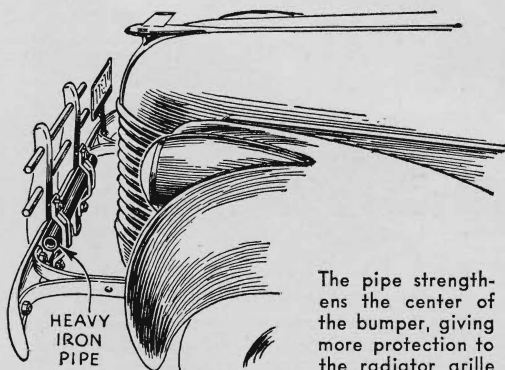
How the radiator-grille initials are made and put on

Windshield-Wiper Tester

I MADE a very useful tester for vacuum-type windshield wipers out of an old tire pump. I took the pump apart and reversed the packing washer on the end of the plunger, then reassembled the unit. Next, I cut off the fitting of the pump hose. To test wipers, it is only necessary to disconnect the vacuum line, insert one end of it into the pump tube, and draw out the pump handle.—R. D.

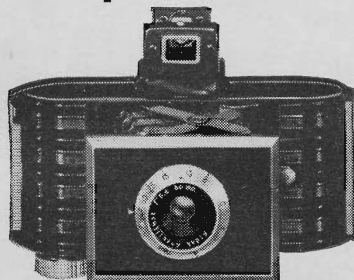
Heavy Iron Pipe Makes Good Bumper Stiffener

HELD firmly in place behind your car's front bumper with iron straps and bolts, a length of heavy iron pipe provides an effective stiffener to help the bumper withstand blows near its center where it ordinarily is most elastic.—G. P.



The pipe strengthens the center of the bumper, giving more protection to the radiator grille

1 What \$14 camera gives me KODACHROME transparencies?



KODAK BANTAM (f/5.6). No extra equipment; just load with Kodachrome (full-color) Film . . . Through modern photofinishing methods, Bantam (f/5.6) also leads to black-and-white pictures 2 3/4 x 4 inches . . . Kodak Bantam, with Kodak Anastigmat f/5.6 lens, \$14; with Kodak Anastigmat Special f/4.5 lens, \$22.50.

2 What camera recently announced is equipped with that great new Supermatic shutter?



KODAK MONITOR SIX-20 (f/4.5 Special). The Supermatic is Eastman's new high-precision between-the-lens shutter, that is unsurpassed anywhere in accuracy. 9 speeds to 1/400 second. Other features: Kodak Anastigmat Special f/4.5 lens, new-type body shutter release, double-exposure prevention, automatic film stop. Price, \$42.50.

Only
EASTMAN makes
the **KODAK**

Suppose your
home should
burn TONIGHT!



"OH, DEAR! I'LL NEVER
REMEMBER EVERYTHING
WE HAD IN THE HOUSE"

Get This

Household Inventory Booklet

YOUR fire insurance policy states that if there is a fire on your premises you "shall furnish a complete inventory of the destroyed, damaged and undamaged property."

Has it occurred to you how difficult it would be to prepare such a list *after* a fire? Many items would undoubtedly be forgotten until after your claim was paid and you signed a release!

Make this listing *before* the fire occurs. Since you don't know when it will come, act at once.

To make it easy for you, we offer you a special booklet for listing your possessions. It points out items most frequently overlooked. Write for yours now.



THE AMERICAN
INSURANCE GROUP
(Dept. 1118) 15 Washington St.
Newark, N. J.

Without charge or obligation,
please send me your Household
Inventory Booklet.

Name *M* _____

Street _____

City _____ State _____

Plastic "Solder" Filler
Speeds Car-Body Repairs

PLASTIC body "solder" is now available to the motorist for filling in small holes and dents on his car body or fenders prior to touching up with paint. The faulty surface is cleaned, roughed with sandpaper, and the solder applied with a knife. When dry, the filling is smoothed with a file or an abrasive to conform to the original curves, and the finishing material put on.—W. B.



Tires Put On in Winter
Give Better Mileage

MOTORISTS have much to be gained by following the frequent practice of operators of large fleets of cars and trucks in replacing worn tires during the cold weather. Four thousand additional miles, it is claimed, can be gained from tires that are broken in during the winter months. Slush, snow, and ice do not wear down the tire treads nearly so fast as do hot, dry pavements, and by the time warm weather sets in, the rubber is thoroughly conditioned through use. It also is an advantage from the standpoint of safety to have good new nonskid treads on your tires for slippery winter driving, when there is enough danger of skidding even under the very best of conditions.—R. S. T.

