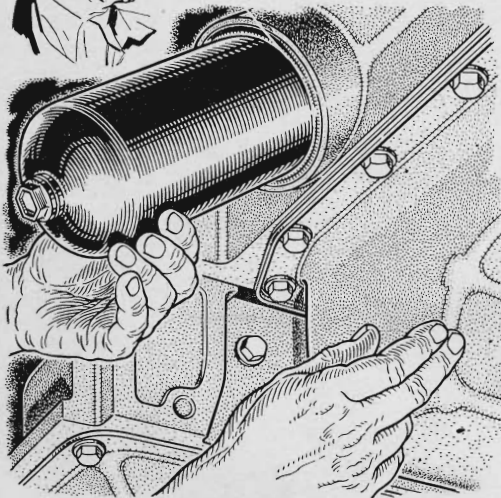
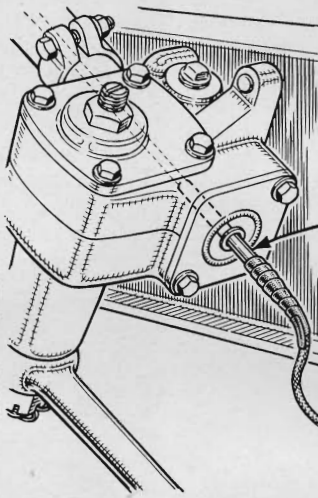


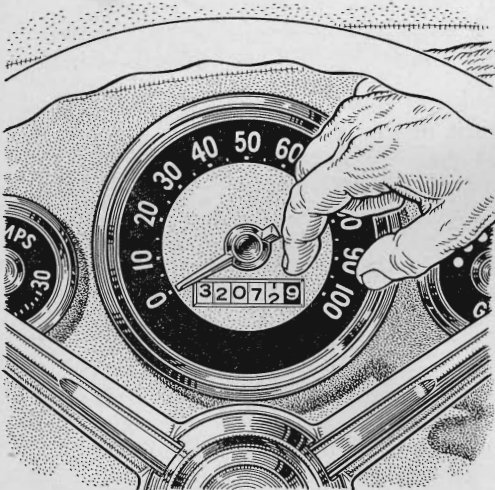
Hints from the Model Garage



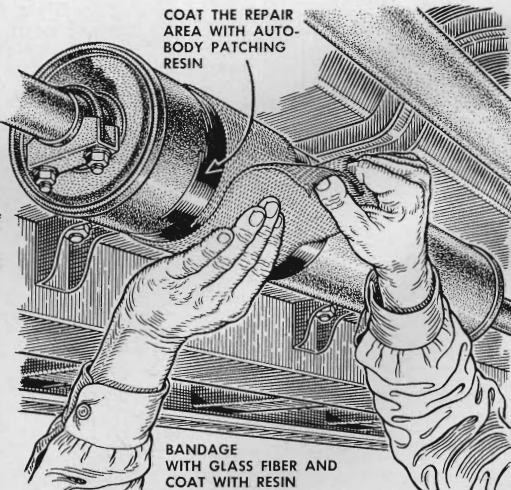
To check an oil filter quickly, feel the temperature of its housing after warming the engine. If the housing feels substantially cooler than the oil pan, the cartridge is dirty and oil is bypassing it. Change it as soon as possible.



A horn wire that's frayed where it enters the steering column can cause the horn to blow when you turn the wheel. Slit a plastic soda straw and slip it over the wire to cover the frayed spot. To hold the straw, tape it to the wire.



Buying a used car? Look closely at the figures on the speedometer. If the first three digits are not in perfect alignment, you can suspect the mileage has been set back. Try to estimate the *true* mileage by the condition of the tires and pedals.



A permanent muffler repair can be made with a glass-fiber body-patching kit. Wire-brush the area around the damaged part and apply a coat of liquid resin. Then wrap a strip of glass-fiber cloth around it and saturate it with resin.